

canvas

101 FOR PARENTS

Elisa Nelson Elementary • August 2020

TODAY'S DISCUSSION

KEY POINTS

What is Canvas
Parent Observer Account
Observer Role
Parent App
Resources
Contact

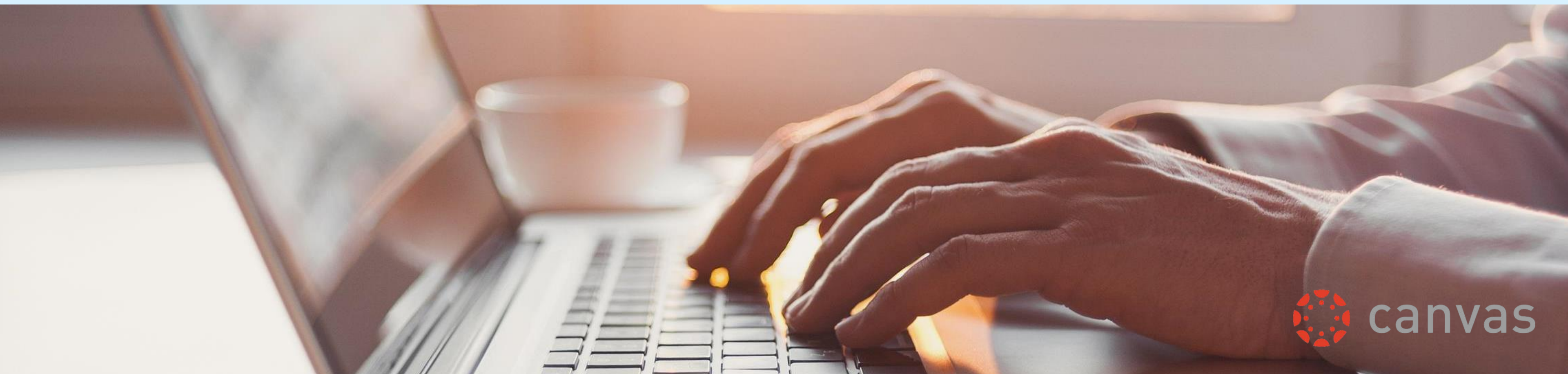


A close-up, warm-toned photograph of a person's hands typing on a laptop keyboard. The scene is bathed in soft, golden light, likely from a window in the background. A white coffee cup is visible on the desk to the left of the laptop. The overall mood is productive and serene.

WHAT IS CANVAS?

LEARNING MANAGEMENT SYSTEM

A way to simplify teaching and learning by connecting all digital tools teachers, students and parents use into one place.



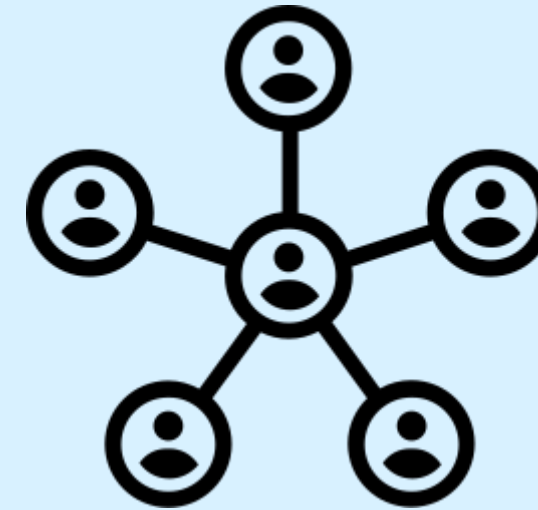
HOW CANVAS CAN BE USED



Personalized
Learning

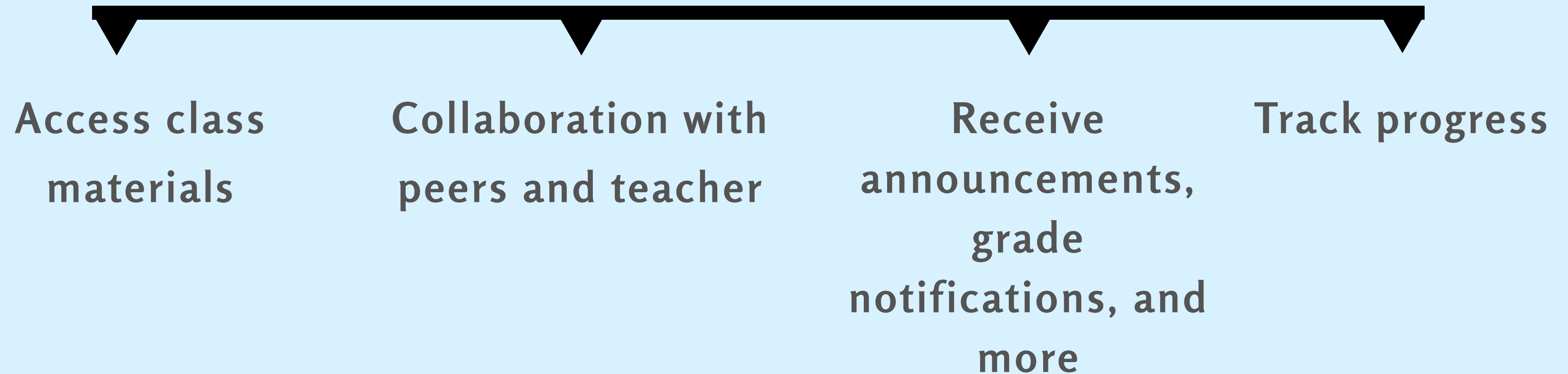


Provide students
with written, audio,
or video feedback



Organize work and
course-related
activities

HOW CAN STUDENT USE CANVAS?





PARENT OBSERVER ACCOUNT

OBSERVER ACCOUNT

With the Canvas observer role parents have the ability to view their students' course content (assignment due dates, assignments, course modules, etc.). When a parents have access to a Canvas "Observer" account they have the ability linked to their student(s) account and follow their student in Canvas

HOW DO I BECOME AN OBSERVER?

Your child's classroom teacher will assign you an Observer Role through a **PAIRING CODE**.

TO GET STARTED YOU MUST HAVE THE FOLLOWING

1

HAVE ACCESS TO YOUR PAIRING CODE

Your child's homeroom teacher will provide a pairing code.

2

YOUR CHILD MUST BE ENROLLED IN A COURSE

This may not occur until close to the start of the first day of school

3

THE SCHOOL URL

<https://pcsb.instructure.com/login>



Parent of a Canvas User?
Click Here For an Account



Click the 'Parent of a Canvas User?' link in the top right corner of the page

r2.d2

Password

☐ Stay signed in

[Forgot Password?](#)

Log In

Students will login through Clever. However parents will use this URL

https://pcsb.instructure.com/login/ldap?pseudonym_session%5Bunique_id%5D=

COMPLETE THE PARENT SIGNUP

**Fully complete the
form to register.**

**DO NOT forget your
student pairing code.**



Parent Signup



Your Name

Your Email

Password

Re-enter Password

Student Pairing Code

[What is a pairing code?](#)

☐ You agree to the [terms of use](#) and acknowledge the [privacy policy](#).

Cancel

Start Participating



OBSERVER ROLE

OBSERVERS CAN



- ▶ VIEW & READ ANNOUNCEMENT
- ▶ VIEW THE CALENDAR
- ▶ VIEW THE DASHBOARD
- ▶ VIEW GRADES, ASSIGNMENT DUE DATES & COMMENTS
- ▶ VIEW OPEN FILES
- ▶ VIEW MODULES & SEE DUE DATES

OBSERVERS CANNOT



- ▶ COMMENT ON
ANNOUNCEMENTS OR
DISCUSSIONS
- ▶ SUBMIT ASSIGNMENTS
OR QUIZZES
- ▶ VIEW COURSE ROSTERS

- ▶ VIEW LOCKED FOLDERS
OR FILES
- ▶ JOIN GROUPS
- ▶ VIEW UNPUBLISHED
COURSES

LIMITATIONS

- Observers can view only the content that the student they are connected to.
- Observers can view assignments even if the student they are observing has not completed them.



The screenshot displays the Canvas LMS interface for a course titled 'ENG 205'. The interface is divided into several key sections:

- Global Navigation Pane (1):** A vertical sidebar on the left containing links to Account, Dashboard, Courses, Calendar, Inbox, and Help.
- Course Navigation Pane (2):** A vertical sidebar below the Global Navigation Pane, containing links to Home, Syllabus, Modules, Assignments, Discussions, Quizzes, Grades, Files, Pages, and Collaborations.
- Breadcrumb Navigation (3):** Located at the top of the main content area, showing the path 'ENG 205 > Modules'.
- Recent Announcements (4):** A section titled 'Recent Announcements' displaying a list of course updates, including 'Course Welcome!', 'Overview', 'Course Introductions', 'Quote of the Day', and 'Reading Assignment 1'.
- Help link (5):** A link located in the bottom right corner of the interface, providing assistance outside the instructor's view.

- 1** The Global Navigation Pane helps identify where you want to go in the Canvas Platform
- 2** The Course Navigation Pane helps you get where you want to go within the course
- 3** The Breadcrumb Navigation shows you where you are within the course.
- 4** The Sidebar will often be empty for observers.
- 5** Help link gives assistance outside the instructor.

PARENT APP



**The Canvas App is limited to
the view of student success:
Calendar, Grades, and Alerts.**

**It is best to access Canvas on
a desktop.**





WHAT TO EXPECT ON THE FIRST DAY OF SCHOOL



ADDITIONAL RESOURCES

<https://www.pcsb.org/mypcsonline>

<https://www.pcsb.org/Domain/168>

A vibrant, hand-drawn illustration depicting a digital ecosystem. At the center is a laptop with a pink cloud on its screen. To its right is a tablet with a pen resting on it. Below the tablet is a smartphone displaying a sad face. To the left of the laptop is a smartwatch with a yellow face. Above the laptop are two envelopes and a Wi-Fi symbol. To the right of the laptop are two speech bubbles with smiley faces. Below the laptop is a hand holding a pen. To the left of the hand is a red box with the text 'COM'. At the bottom left are currency symbols (£, \$, €) and a lightning bolt icon. The background is white with various colored circles and lines representing connectivity and data flow.

Second Point of Contact:
Rachel Martin *Media Specialist*
martinrac@psb.org

ANY
QUESTIONS?

A hand holding a blue marker is shown on the right side of the image, drawing a blue underline under the word 'QUESTIONS?'. The hand is positioned vertically, with the thumb and index finger gripping the marker. The marker is a bright blue color, matching the text. The underline is a single, slightly wavy blue line that extends from the left edge of the image to the right edge, passing under the word 'QUESTIONS?'. The background is a solid, light blue color.